



# CLEAN CALIFORNIA

A transformative initiative to remove litter,  
create jobs and beautify California

Clean California Local Grant Program, Cycle 2

Application Workshop #1

March 15, 2023



# CLEAN CALIFORNIA

A transformative initiative to remove litter, create jobs and beautify California







## LOCAL GRANT PROGRAM

# Agenda

1. Meet the Team
2. Participant Engagement
3. Overview of 5 Key Application Forms
4. Next Steps



City of Pittsburg Project Groundbreaking



## LOCAL GRANT PROGRAM

# Participant Engagement

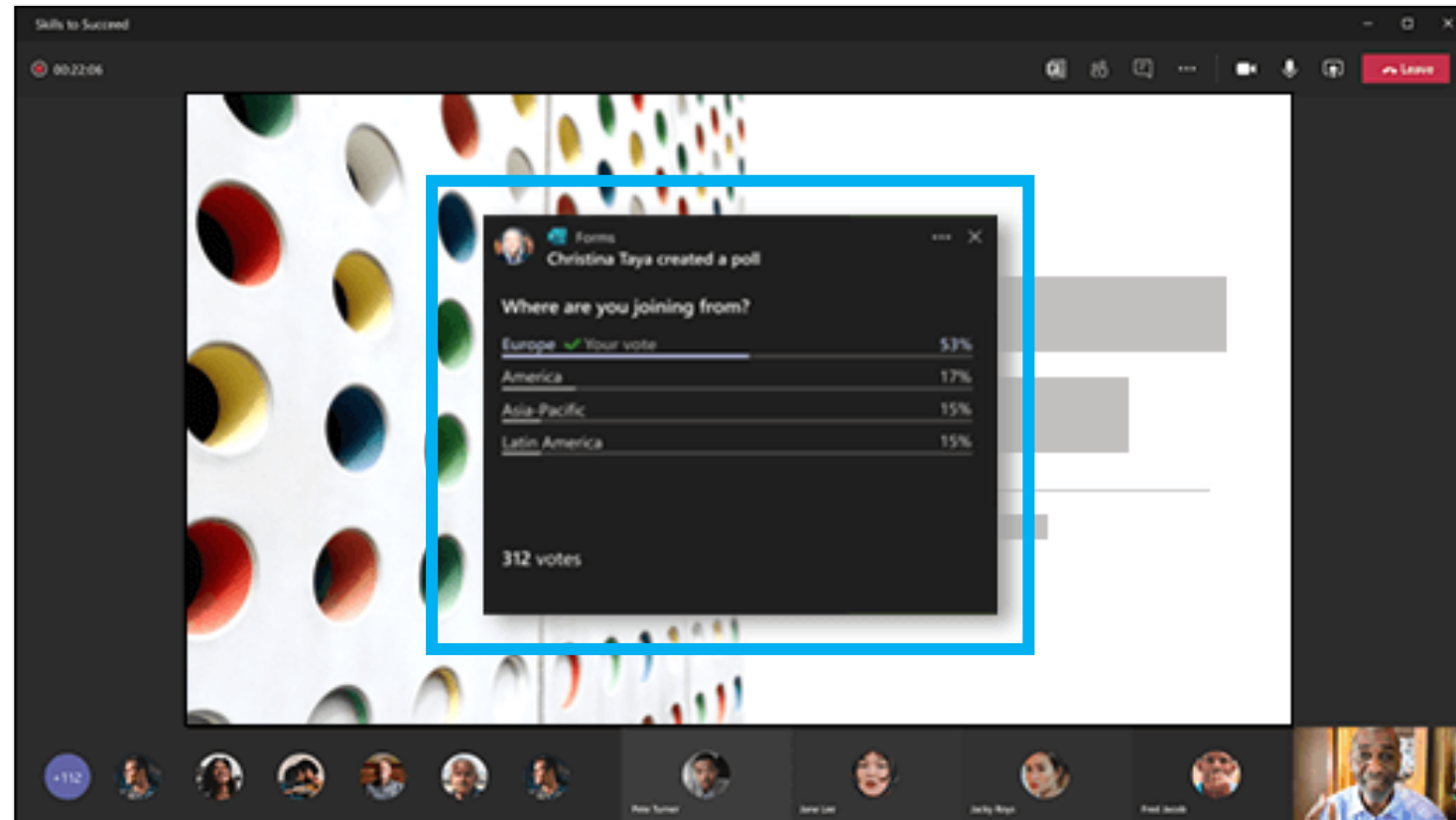
### We want your questions on the:

- Main Smartsheet Application Form
- Area Surrounding the Project Site and Relative Population Benefit to Underserved Communities Form
- Narrative
- Scope, Cost, and Schedule Form
- Local Match Calculation Form



## LOCAL GRANT PROGRAM

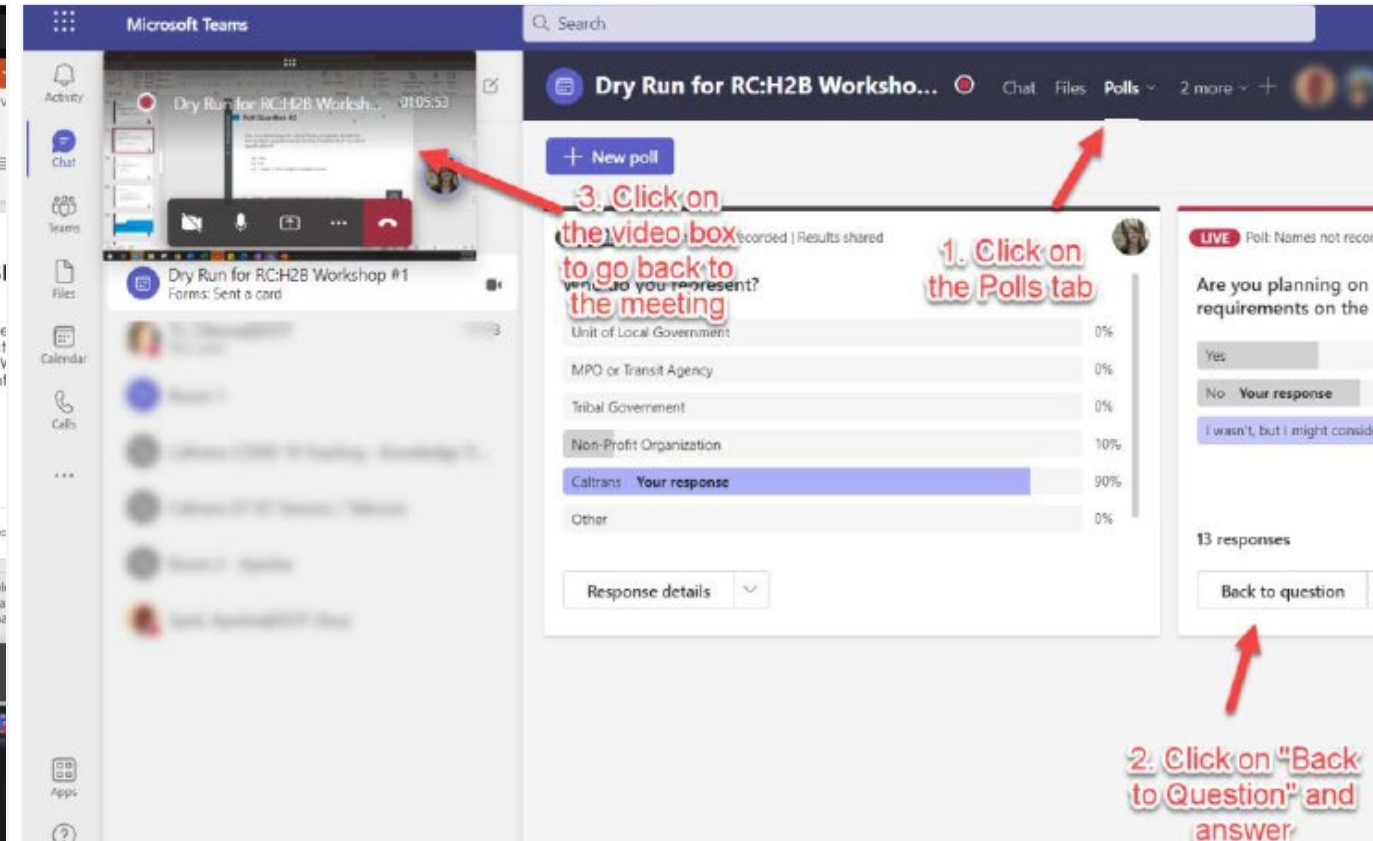
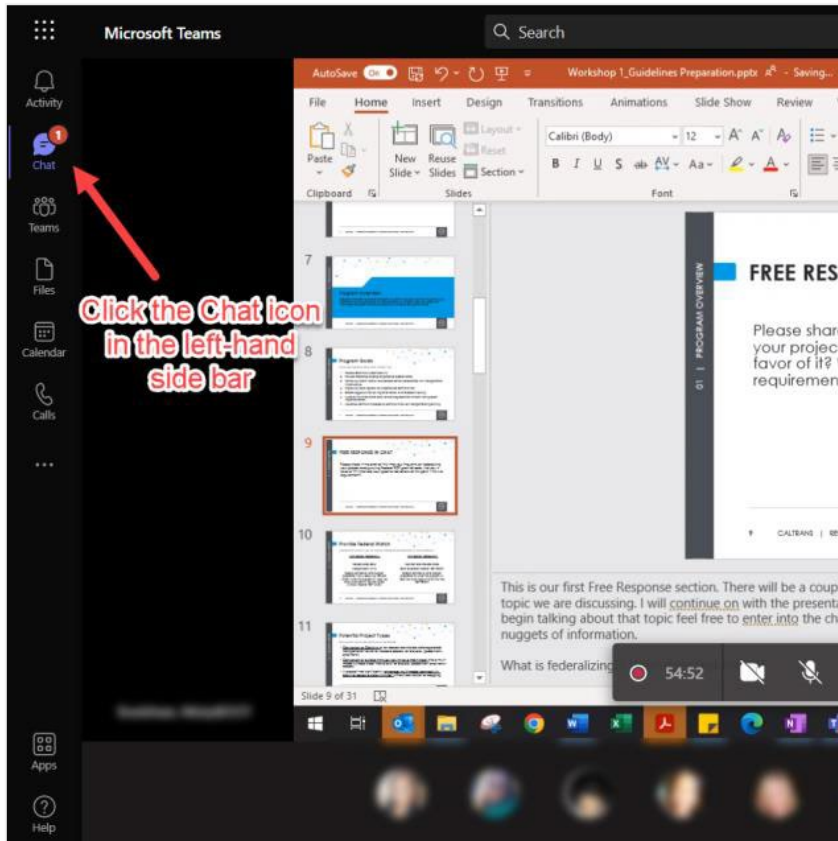
# Polls on Desktop





# LOCAL GRANT PROGRAM

## Polls on Web







## LOCAL GRANT PROGRAM

# Polls on Mobile

**Poll: Not record name ; R...** [View](#)

**Are you planning on using these program funds for the match requirements on the Federal RCP Cycle 2 application?**

- Yes
- No
- I wasn't, but I might consider it now.

[Submit Vote](#)

Yes	23% (3)
No	30% (4)
I wasn't, but I might consider it now.	46% (6)

**13 responses**

**Chat** [Details](#) [More](#)

**Forms**

**LIVE** Poll: Not record name...

**Bradshaw, M:** Well it sounds like that's

**Misty@DOT B.** ...

**Ayesha@DOT S.** **Chavez, Gret...** **Begley, Alys...** **Misty@DOT B.** **Emily@DOT G.**

<https://cleancalifornia.dot.ca.gov/local-grants/local-grant-program>  
CleanCA.LocalGrant@dot.ca.gov



## LOCAL GRANT PROGRAM

Poll Question 1: Who is participating today?

- Transportation agency
- Local agency
- Tribal representative
- Non-profit organization
- Consultant
- Caltrans
- Other





## LOCAL GRANT PROGRAM

# Application Package Overview

### Cycle 2 Application Form and Attachments



- Required for all applications:

- [Main Smartsheet Application Form](#)
- [Project Outcomes Spreadsheet \(XLXS\)](#)
- [Area Surrounding the Project Site and Relative Population Benefit to Underserved Communities Form \(XLXS\)](#)
- [Narrative \(DOC\)](#)
- [Scope of Work, Cost, and Schedule Workbook \(XLXS\)](#)
- [Local Match Calculation Form \(XLXS\)](#) (only optional for Tribal projects. Open form for details.)
- [Application Checklist \(PDF\)](#)



- Applicable to only certain applications:

- If you are requesting Advance Payment, a [Spending Plan \(XLXS\)](#)
- If using in-kind contributions, [Letters of Commitment \(DOC\)](#) from third party contributors
- For infrastructure projects, copy of the Right of Way certification document (no standard template for this, see FAQ for details)
- Any other documents or materials that help demonstrate project need or viability (no standard template for this, see end of Smartsheet form for details)

<https://cleancalifornia.dot.ca.gov/local-grants/local-grant-program>

CleanCA.LocalGrant@dot.ca.gov



## LOCAL GRANT PROGRAM

# Application Resources Overview

## Cycle 2 Application Instructions and Tutorials

- [Application Instructions \(PDF\)](#)
- Local Match Tutorials:
  - [START HERE: Determine the Half Mile Limit Around Your Project \(PDF\)](#)
  - [Option 1: Area Median Income \(PDF\)](#)
  - [Option 2: CalEnviroScreen 4.0 \(PDF\)](#)
  - [Option 3: National School Lunch Program \(PDF\)](#)
  - [Option 4: Healthy Places Index \(PDF\)](#)
  - Note, there is no tutorial on Option 5, because under this option, the local match requirement is automatically 0%.



## LOCAL GRANT PROGRAM

# Main Smartsheet Application Form

### Cycle 2 Application Form and Attachments

- Required for all applications:

- - [Main Smartsheet Application Form](#)
  - [Project Outcomes Spreadsheet \(XLXS\)](#)
  - [Area Surrounding the Project Site and Relative Population Benefit to Underserved Communities Form \(XLXS\)](#)
  - [Narrative \(DOC\)](#)
  - [Scope of Work, Cost, and Schedule Workbook \(XLXS\)](#)
  - [Local Match Calculation Form \(XLXS\)](#) (only optional for Tribal projects. Open form for details.)
  - [Application Checklist \(PDF\)](#)



## LOCAL GRANT PROGRAM

# Key Points on the Main Smartsheet Application Form

- Application deadline: April 28, 2023, 5 PM **PDT**.
- Don't need a Smartsheet license to submit this form.
- Don't submit the form without all the attachments required ***for your project***.
- You can't save your progress on the form, which is why we provided the **OPTIONAL** intake form. Do not submit this form.
- Fields marked with an asterisk (\*) are required.





## LOCAL GRANT PROGRAM

Poll Question 2: What is your primary role in the application process?

- I am the main person completing the application.
- I am helping the main person complete the application.
- I am not filling out the application, but want to be informed of the process.



## LOCAL GRANT PROGRAM


Please submit questions in the chat regarding the Main Smartsheet Application Form.



## LOCAL GRANT PROGRAM

# Area Surrounding the Project Site and Relative Population Benefit to Underserved Communities Form

### Cycle 2 Application Form and Attachments

- Required for all applications:
  - [Main Smartsheet Application Form](#)
  - [Project Outcomes Spreadsheet \(XLXS\)](#)
  -  [Area Surrounding the Project Site and Relative Population Benefit to Underserved Communities Form \(XLXS\)](#)
  - [Narrative \(DOC\)](#)
  - [Scope of Work, Cost, and Schedule Workbook \(XLXS\)](#)
  - [Local Match Calculation Form \(XLXS\)](#) (only optional for Tribal projects. Open form for details.)
  - [Application Checklist \(PDF\)](#)



## LOCAL GRANT PROGRAM

# Key Points on the Area Surrounding the Project Site and Relative Population Benefit to Underserved Communities Form

- For the Relative Population Benefit tabs (first 2 tabs) only include census tracts around **INFRASTRUCTURE** project sites. For the Population Surrounding the Project Site tab (third tab) include census tracts around **ALL** project sites.
- Pick one definition of “underserved community” and use it throughout the tables.
- If you add more rows, need to apply formulas to those new rows.
- Review the instructions at the top of each tab and the example tabs for more information.

<https://cleancalifornia.dot.ca.gov/local-grants/local-grant-program>

CleanCA.LocalGrant@dot.ca.gov





## LOCAL GRANT PROGRAM

Poll Question 3: What type of project will you apply for?

- Infrastructure
- Non-infrastructure
- Both
- Unsure



## LOCAL GRANT PROGRAM


Please submit questions in the chat regarding the Area Surrounding the Project Site and Relative Population Benefit to Underserved Communities Form.



## LOCAL GRANT PROGRAM

# Narrative

### Cycle 2 Application Form and Attachments

- Required for all applications:
  - [Main Smartsheet Application Form](#)
  - [Project Outcomes Spreadsheet \(XLXS\)](#)
  - [Area Surrounding the Project Site and Relative Population Benefit to Underserved Communities Form \(XLXS\)](#)
  -  [Narrative \(DOC\)](#)
  - [Scope of Work, Cost, and Schedule Workbook \(XLXS\)](#)
  - [Local Match Calculation Form \(XLXS\)](#) (only optional for Tribal projects. Open form for details.)
  - [Application Checklist \(PDF\)](#)



## LOCAL GRANT PROGRAM

# Key Points on the Narrative

- The Narrative should basically answer “Why should we fund your project?”
- Complete and brief answers are appreciated!
- **Don't** assume that the person reviewing your application is already familiar with your community or project.
- The more severe the community need is and the more goals the project meets, the more competitive it is.
- The Project Deliverability and Maintenance sections are very important.





## LOCAL GRANT PROGRAM

Poll Question 4: What size grant amount request will you apply for?  
*(if you are submitting multiple applications, provide dollar value of largest project)*

- Less than \$500K
- \$500K to \$1 million
- \$1 million to \$2 million
- \$2 million to \$3 million
- \$3 million – \$5 million



## LOCAL GRANT PROGRAM

Please submit questions in the chat regarding the Narrative.



## LOCAL GRANT PROGRAM

# Local Match Calculation Form

### Cycle 2 Application Form and Attachments

- Required for all applications:
  - [Main Smartsheet Application Form](#)
  - [Project Outcomes Spreadsheet \(XLXS\)](#)
  - [Area Surrounding the Project Site and Relative Population Benefit to Underserved Communities Form \(XLXS\)](#)
  - [Narrative \(DOC\)](#)
  - [Scope of Work, Cost, and Schedule Workbook \(XLXS\)](#)
  - [Local Match Calculation Form \(XLXS\)](#) (only optional for Tribal projects. Open form for details.)
  - [Application Checklist \(PDF\)](#)





## LOCAL GRANT PROGRAM

# Key Points on the Local Match Form

- This form is required for all applicants EXCEPT Tribal applicants. They can fill out the form (third tab) if they'd like, but this is unnecessary.
- The same underserved community definition should be used throughout Table 1.
- To complete Table 1 refer to the Local Match Tutorials.
- If you have two or more project sites within the same census tract, do not list that census tract multiple times in Table 1.
- If you add rows to the tables, need to apply formulas to the new rows.





## LOCAL GRANT PROGRAM

Poll Question 5: How many applications do you plan to submit?

- 0
- 1
- 2
- More than 2
- Unsure



## LOCAL GRANT PROGRAM

Please submit questions in the chat regarding the Local Match Calculation Form.



## LOCAL GRANT PROGRAM

# Scope, Cost, and Schedule Workbook

### Cycle 2 Application Form and Attachments

- Required for all applications:
  - [Main Smartsheet Application Form](#)
  - [Project Outcomes Spreadsheet \(XLXS\)](#)
  - [Area Surrounding the Project Site and Relative Population Benefit to Underserved Communities Form \(XLXS\)](#)
  - [Narrative \(DOC\)](#)
  - [Scope of Work, Cost, and Schedule Workbook \(XLXS\)](#)
  - [Local Match Calculation Form \(XLXS\)](#) (only optional for Tribal projects. Open form for details.)
  - [Application Checklist \(PDF\)](#)





## LOCAL GRANT PROGRAM

# Key Points on the Scope, Cost, and Schedule

- Follow the instructions.
- Required for all projects.
- Don't need to fill out all the tabs.
- One workbook for both infrastructure and non-infrastructure, but different tabs.
- Don't fill out shaded cells.
- Round amounts to the nearest thousands.
- Check your work.



## LOCAL GRANT PROGRAM

Poll Question 6: Will any part of your project encroach onto or touch the State Highway System?

- Yes
- No
- Unsure



## LOCAL GRANT PROGRAM

Please submit questions in the chat regarding the Scope, Cost, and Schedule Workbook.





## LOCAL GRANT PROGRAM

### Next Steps

- Submit additional questions to [CleanCA.LocalGrant@dot.ca.gov](mailto:CleanCA.LocalGrant@dot.ca.gov).
- In approximately 1 week, recording of this meeting and slides will be posted at: <https://cleancalifornia.dot.ca.gov/local-grants/local-grant-program>.
- Look out for announcement of second workshop
  - Sign up for our mailing list here:  
<https://lp.constantcontactpages.com/su/BX4kgoT/CleanCALocalGrant>.
- CCLGP Team will update the FAQ and instructions based on questions received.



## LOCAL GRANT PROGRAM

### Next Steps

	Milestone	Date
✓	Call for Projects	February 14, 2023
→	Application Workshops	March through April 2023
	Application Due Date	April 28, 2023 at <b>5 PM PDT</b>
	Award Announcement	August/September 2023
	Project Completion Date	June 30, 2026



# Important Links

- The Clean California Local Grant Program webpage: <https://cleancalifornia.dot.ca.gov/local-grants/local-grant-program>
- Join our mailing list to receive information on the Local Grant Program:  
<https://lp.constantcontactpages.com/su/BX4kgoT/CleanCALocalGrant>
- Overall Clean California Program website: [www.cleancalifornia.dot.ca.gov](http://www.cleancalifornia.dot.ca.gov)